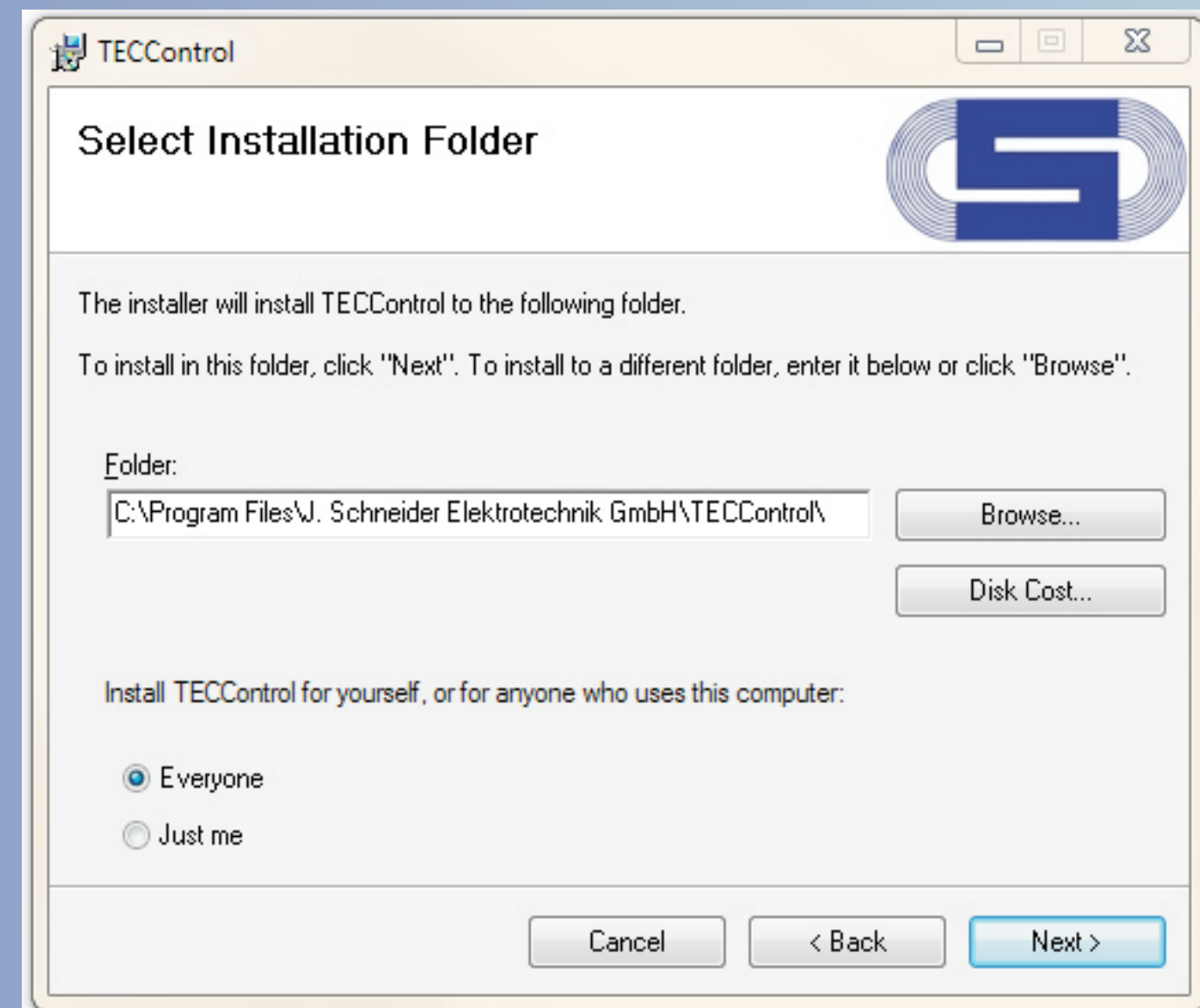
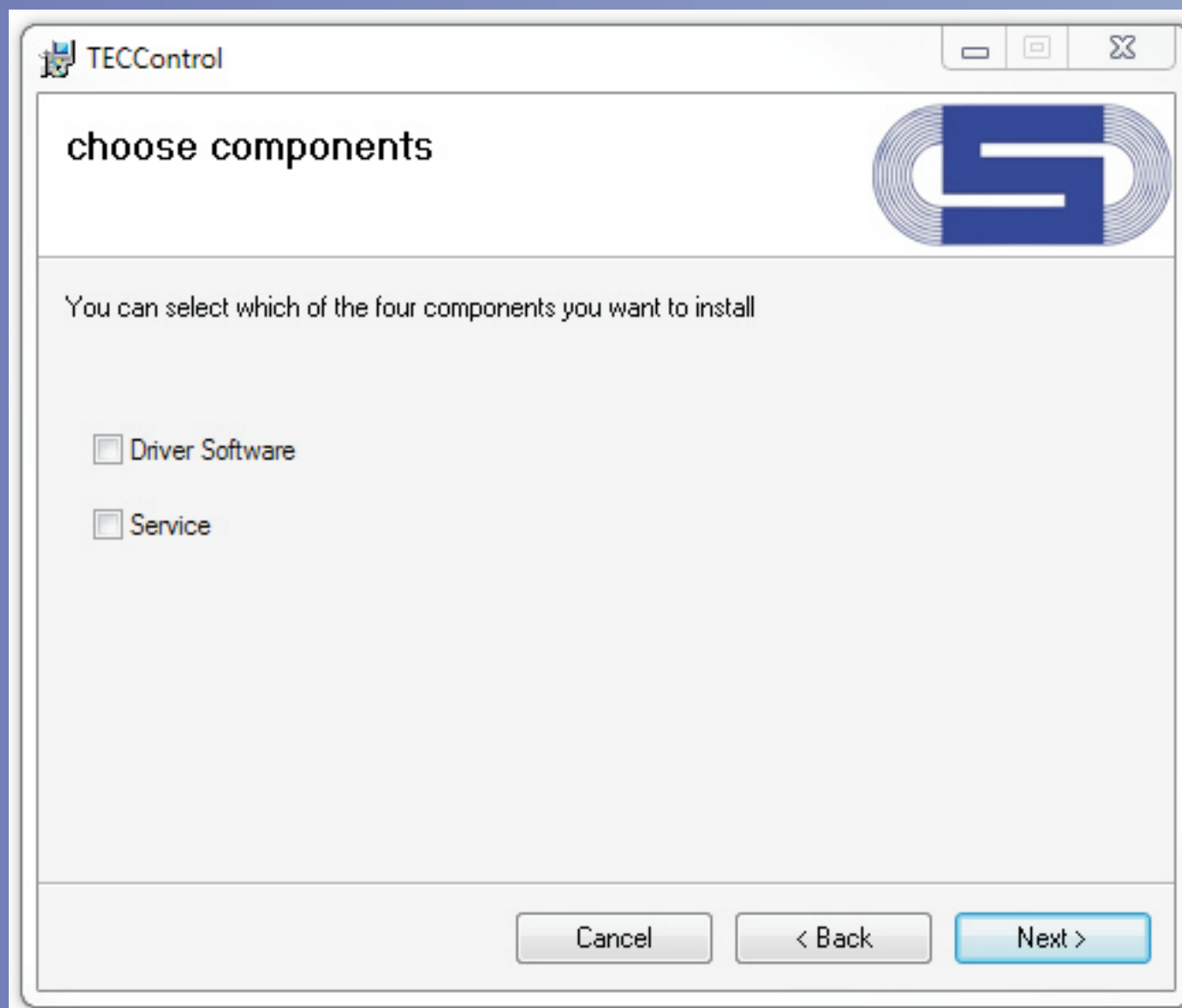
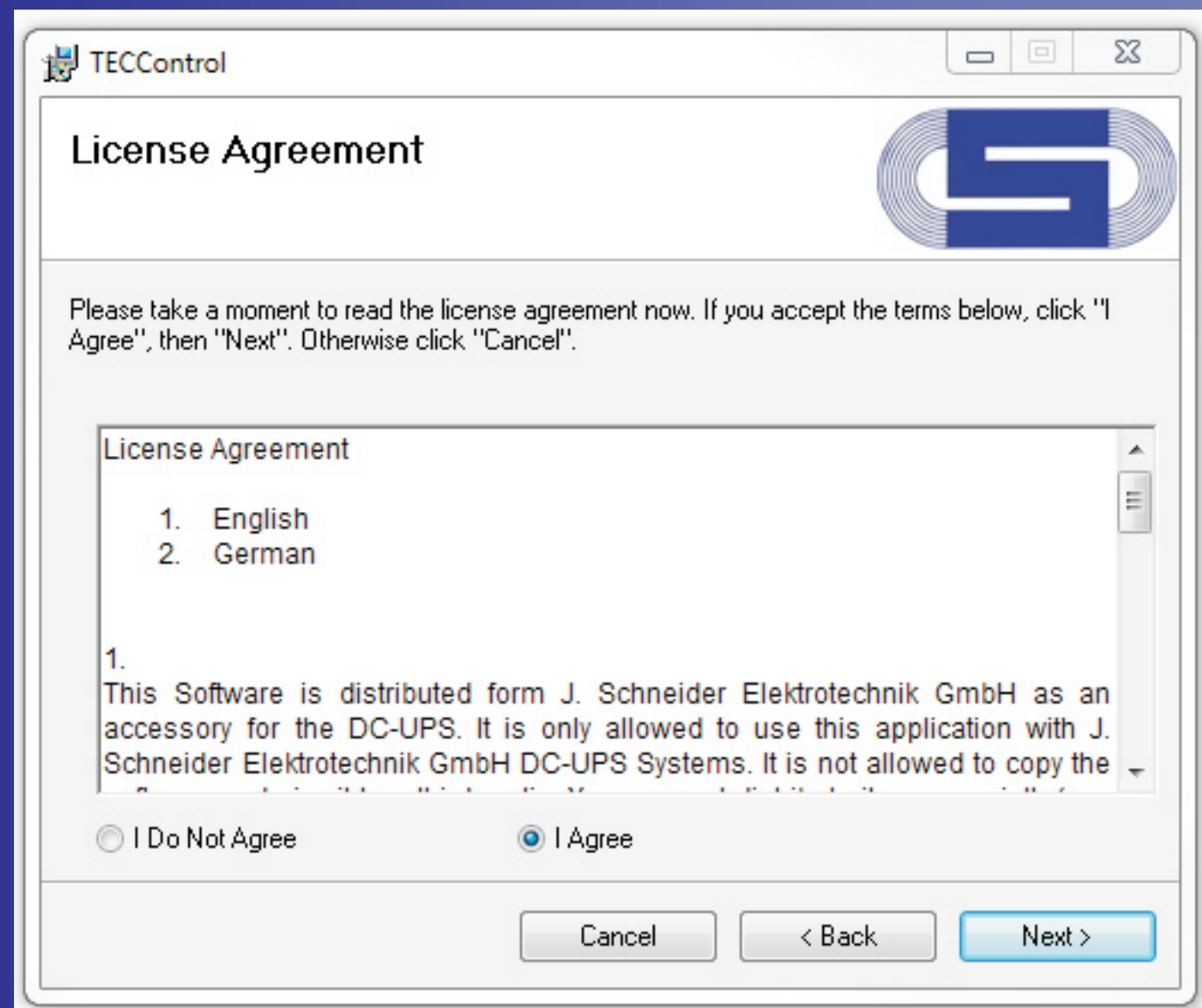


Software Installation



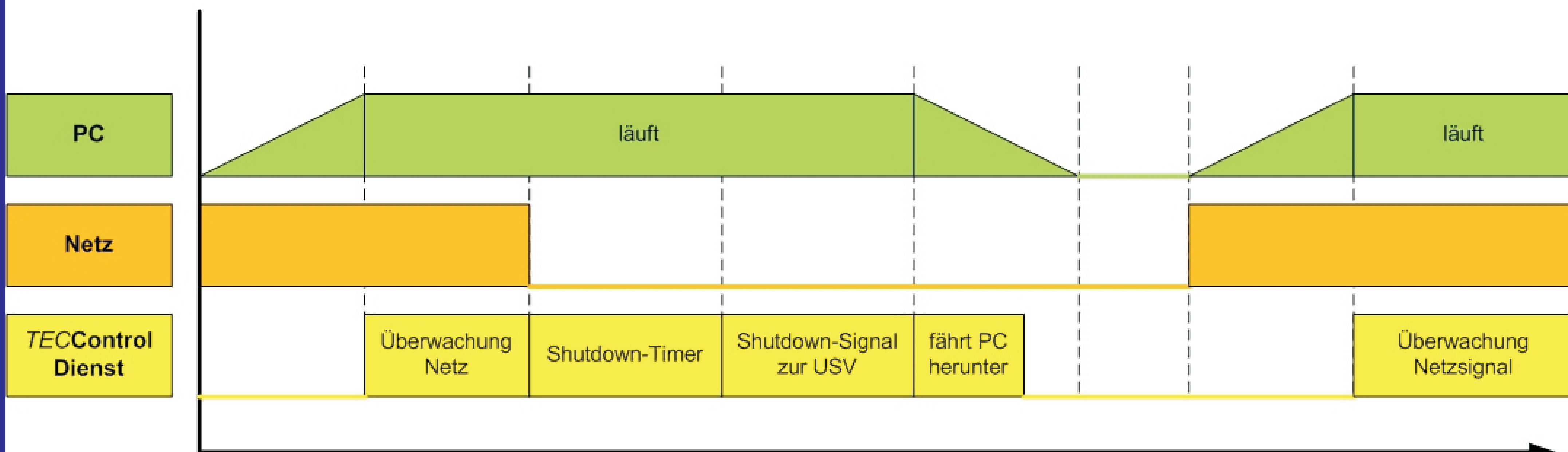
1. Um die Installation starten zu können muss der Lizenzvereinbarung zugestimmt werden.

2. Der Installationsordner und die Benutzer der *TECControl*-Software können frei gewählt werden.

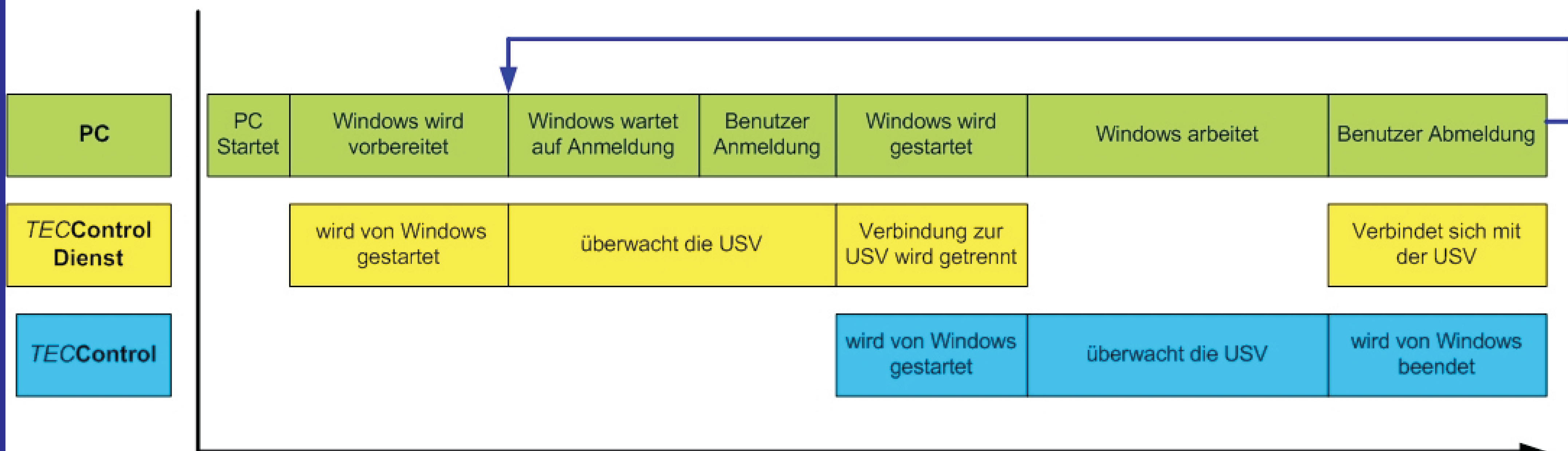
3. Wahlweise kann zu der *Windows*-Software noch der Gerätetreiber und der *TECControl*-Dienst installiert werden.

Ablaufschema

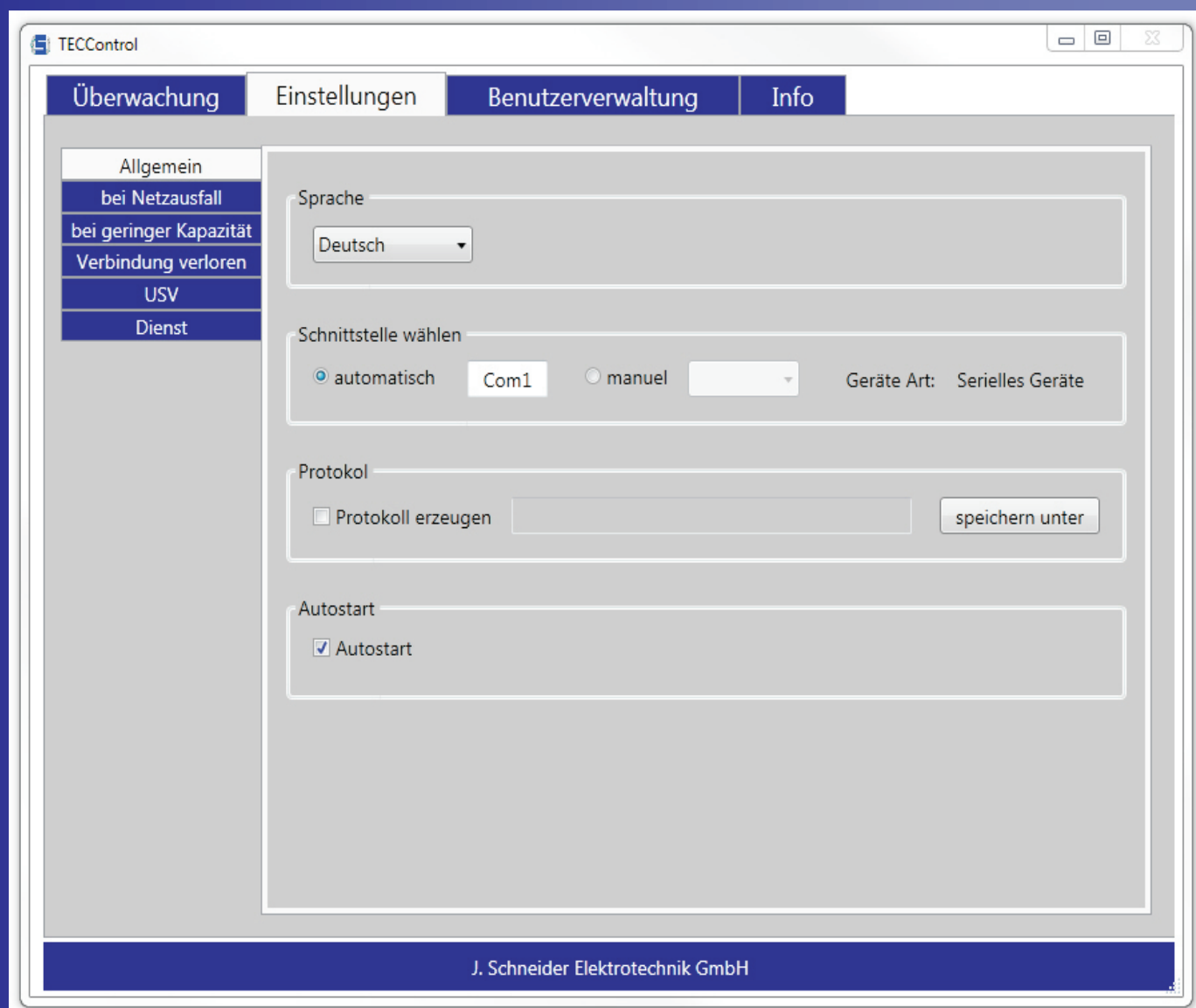
TECControl Dienst



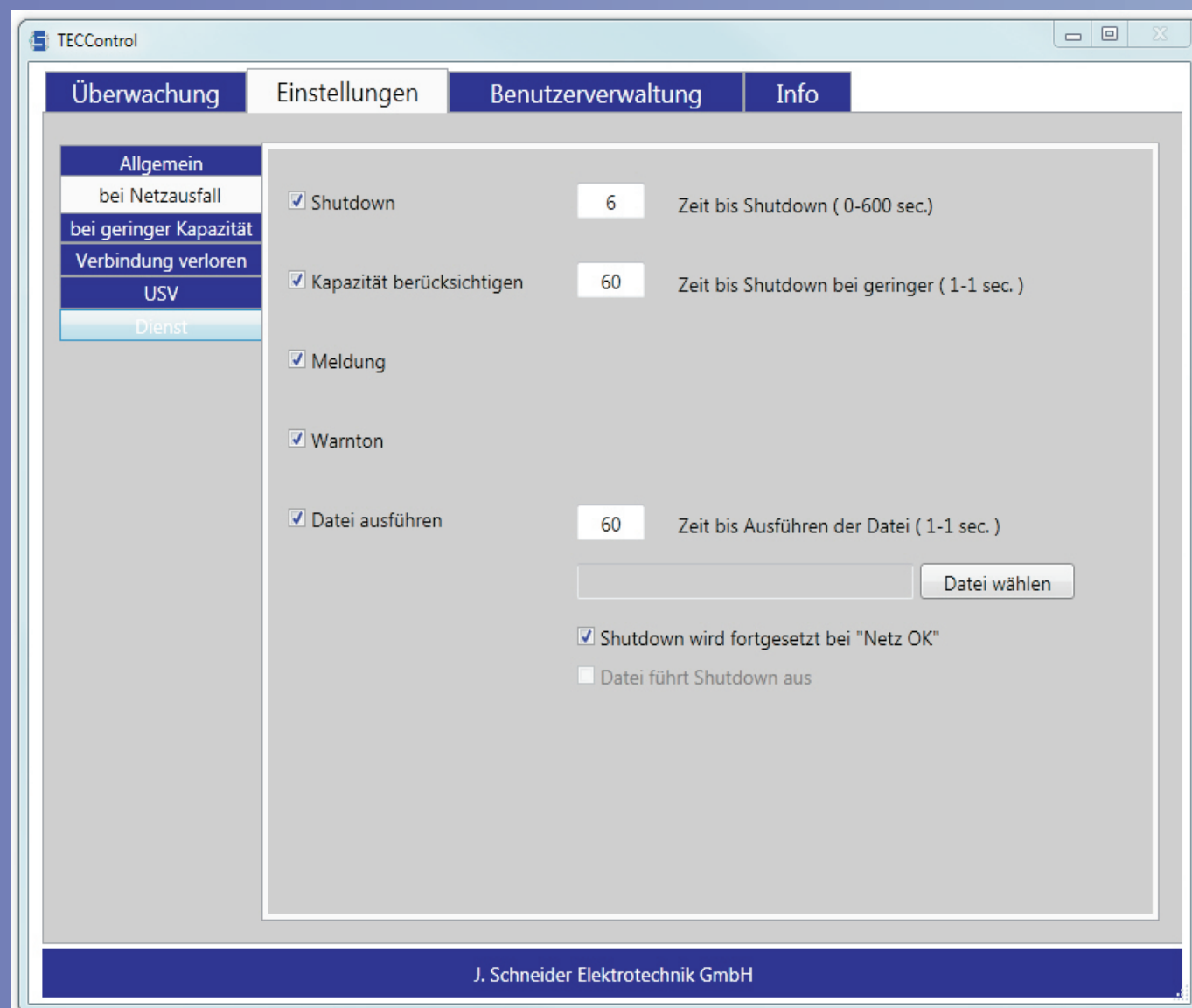
TECControl Zusammenhang Dienst und *Windows* Applikation



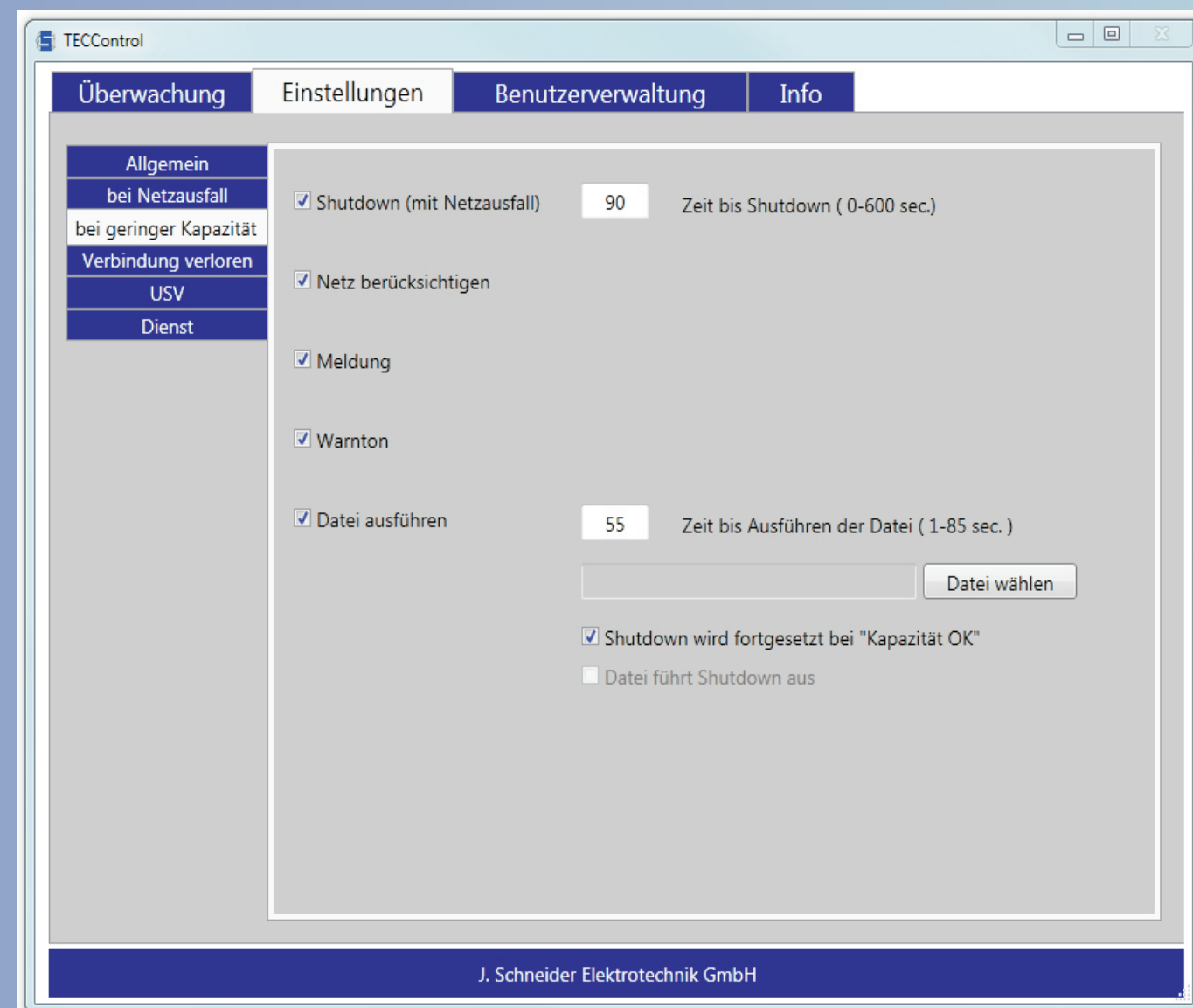
Bedienung *TECControl* Software



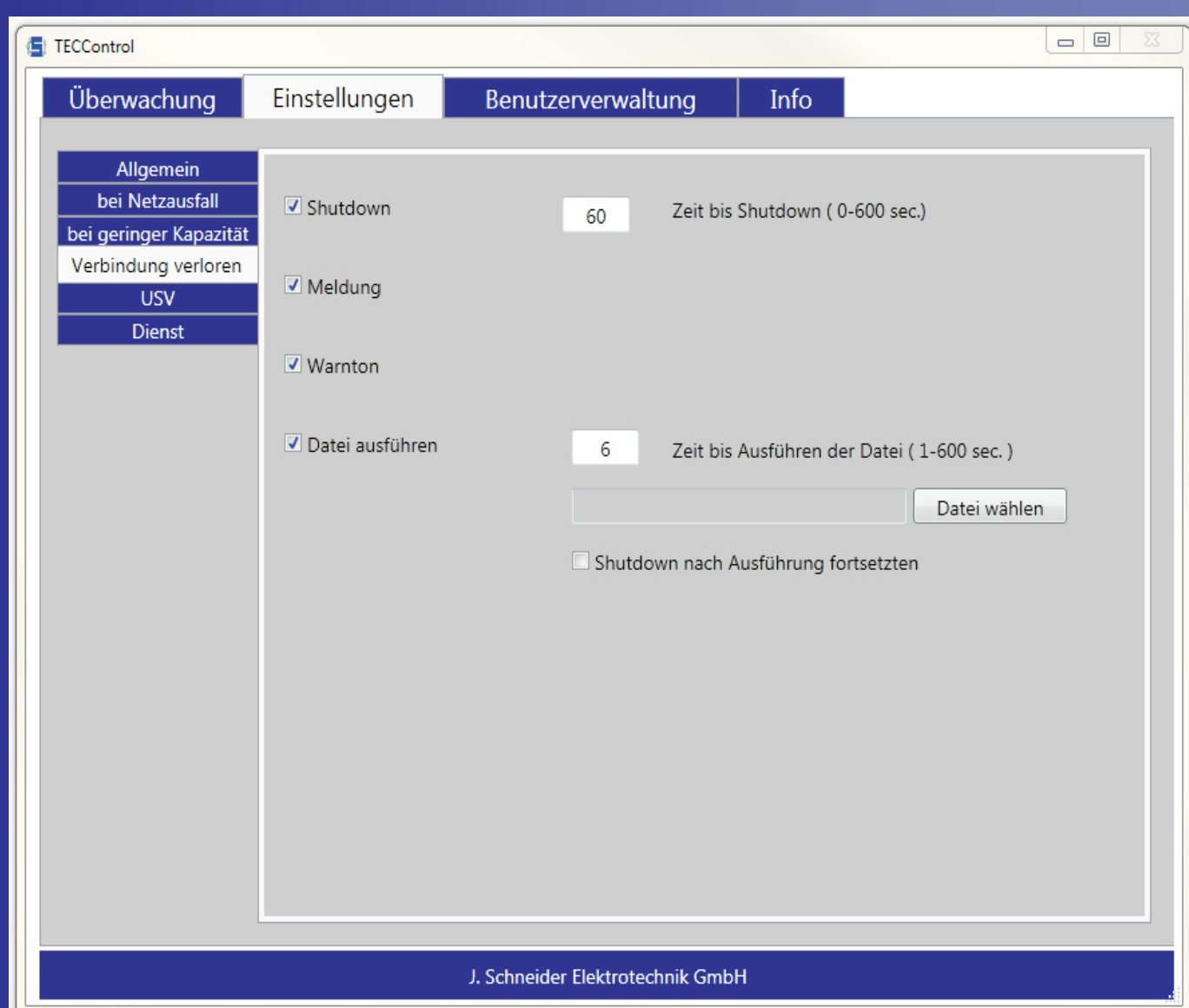
1. „Allgemein“:
Einstellmöglichkeit für Sprache, Schnittstelle, Protokoll und Autostart.



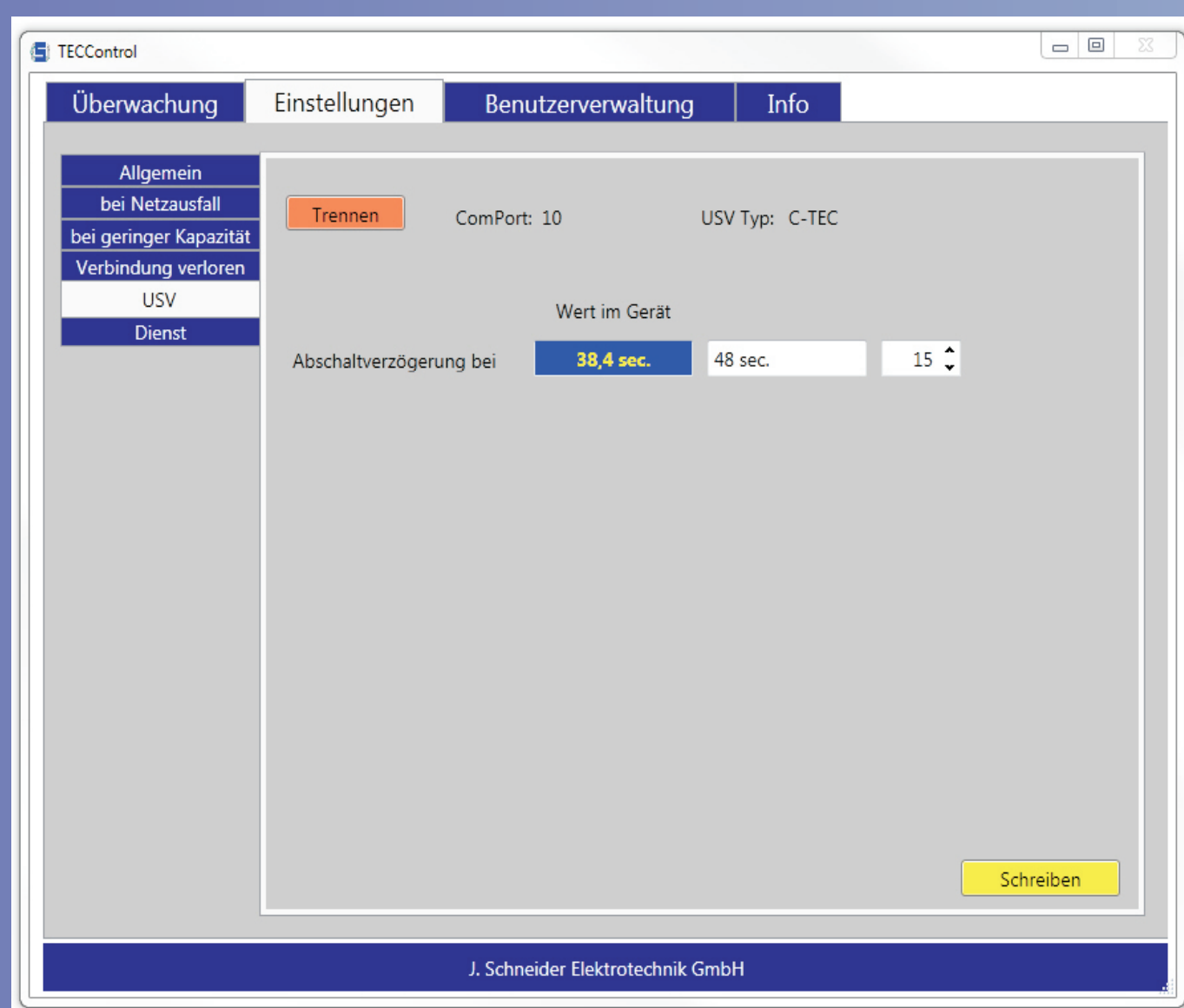
2. „bei Netzausfall“:
Mögliche Aktionen: System-Shutdown, Meldung, Warnton, Ausführung einer externen Datei/Programm.



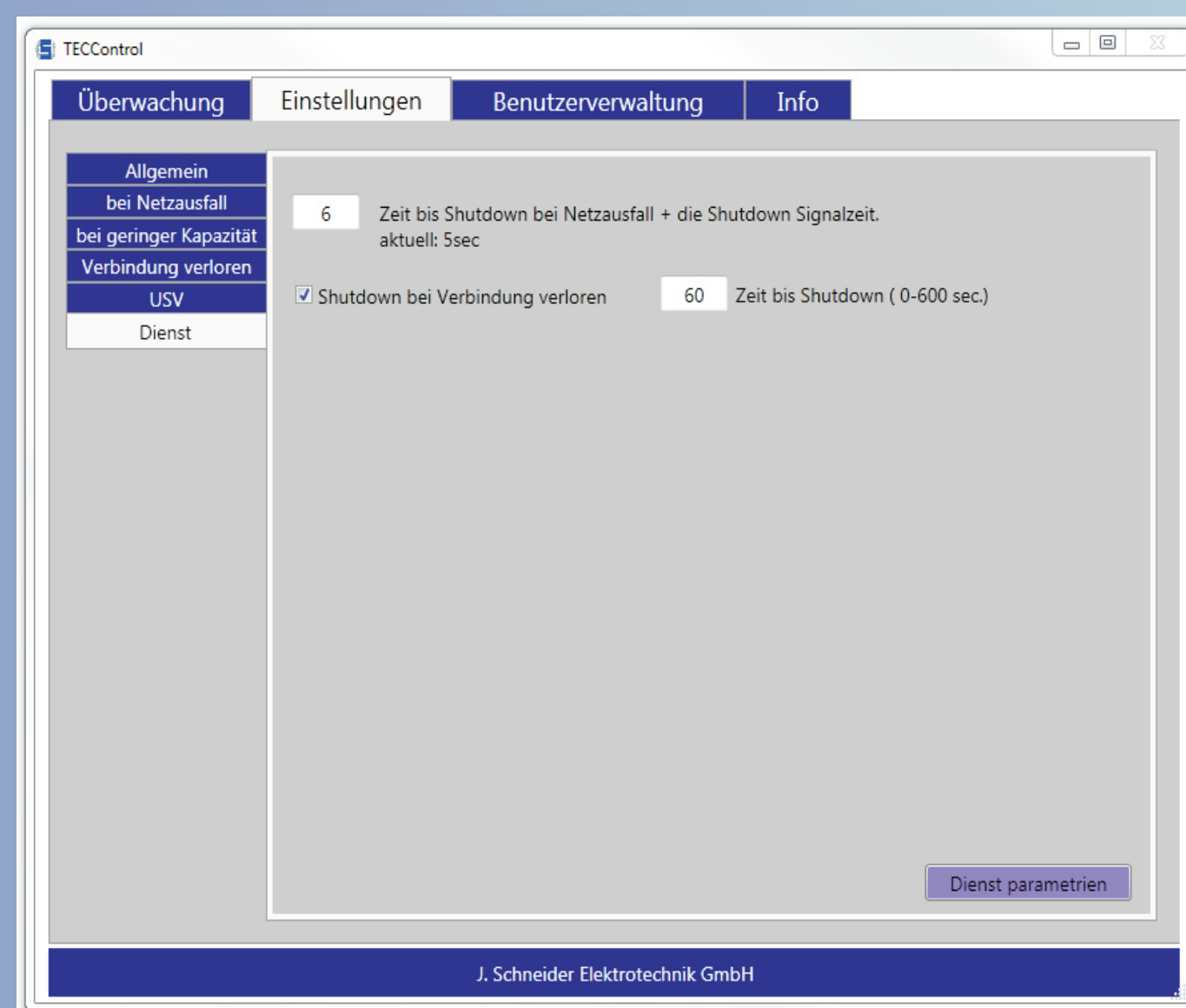
3. „bei geringer Kapazität“:
Mögliche Aktionen: System-Shutdown, Meldung, Warnton, Ausführung einer externen Datei/Programm.



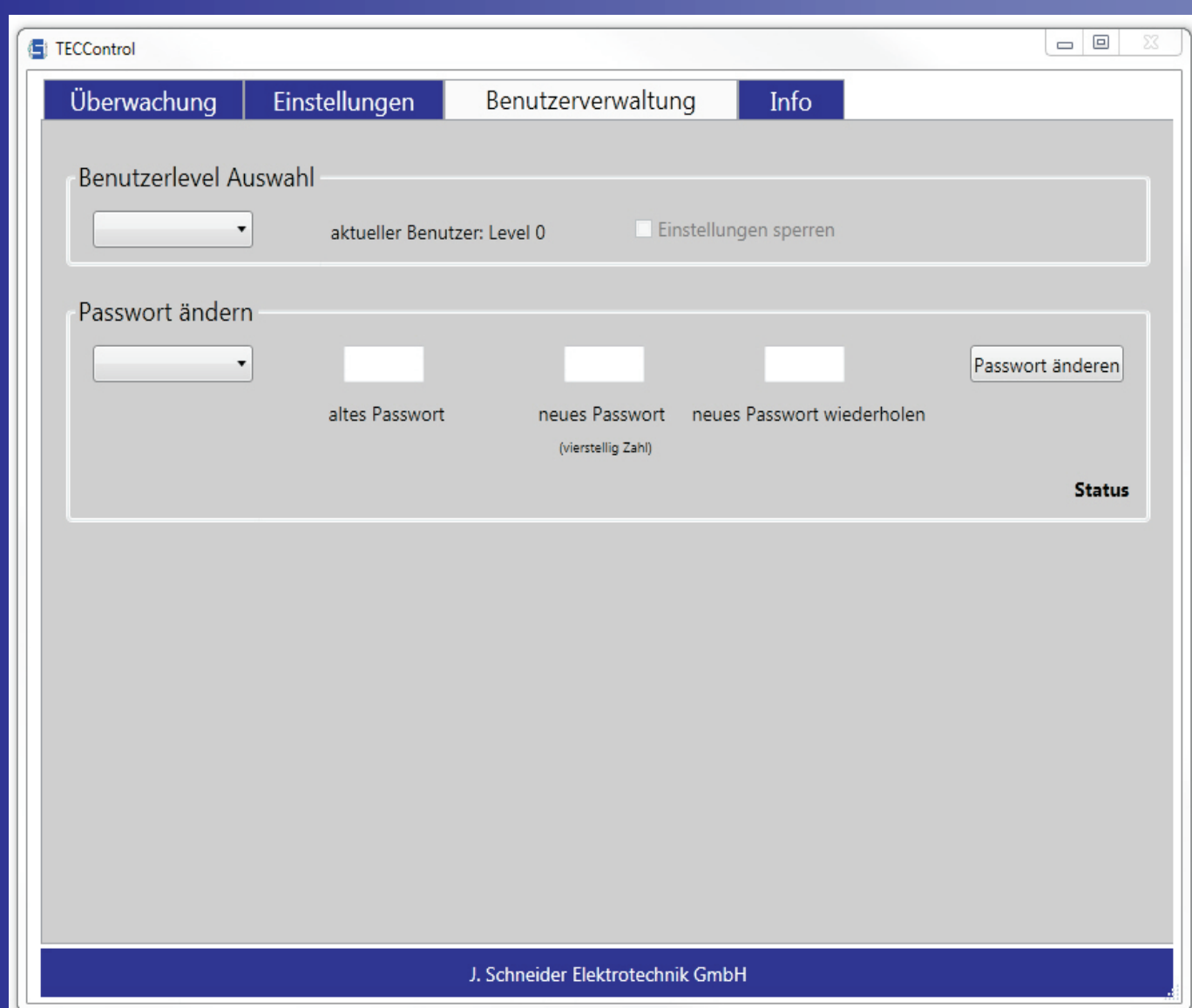
4. „Verbindung verloren“:
Mögliche Aktion: System-Shutdown.



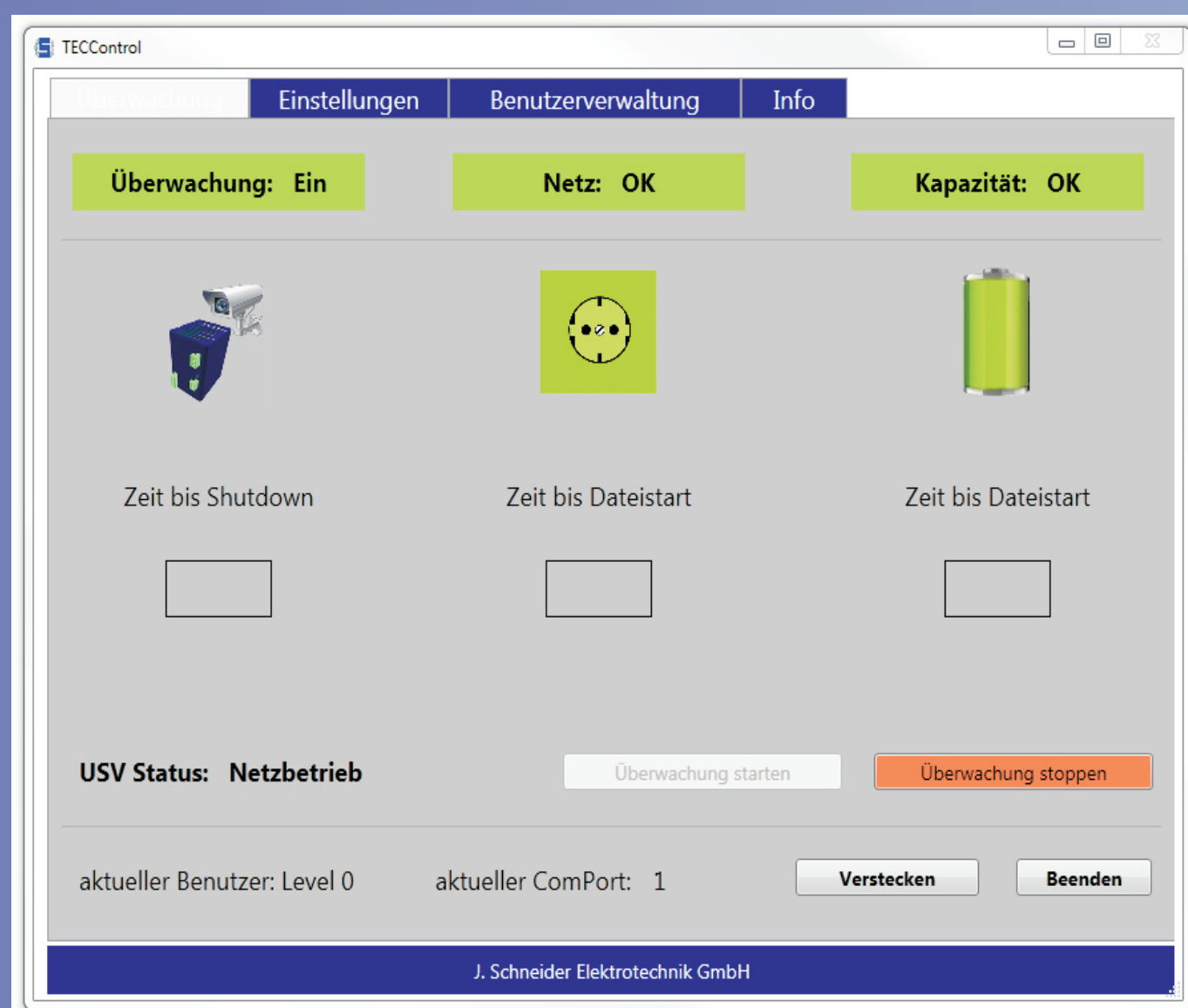
5. „USV“:
Einstellung des Geräteparameters *Abschaltverzögerung bei USB Shutdown-Signal*.



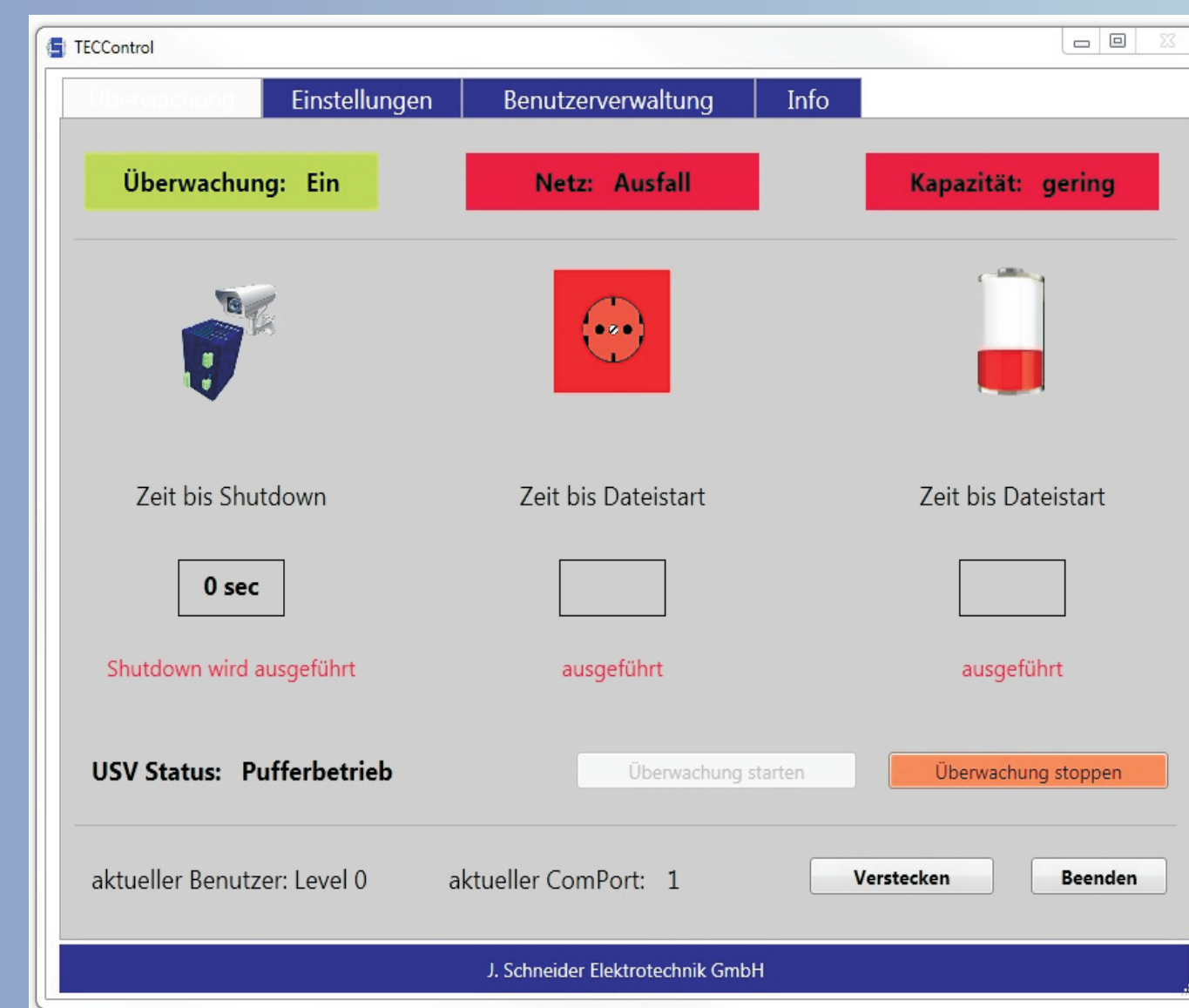
6. „Dienst“:
Dienst-Parameter:
Zeit bis System-Shutdown (Netzausfall)
System-Shutdown (Verbindung verloren)



7. „Benutzerverwaltung“:
Möglichkeit um die Einstellungen der *TECControl* zu schützen.

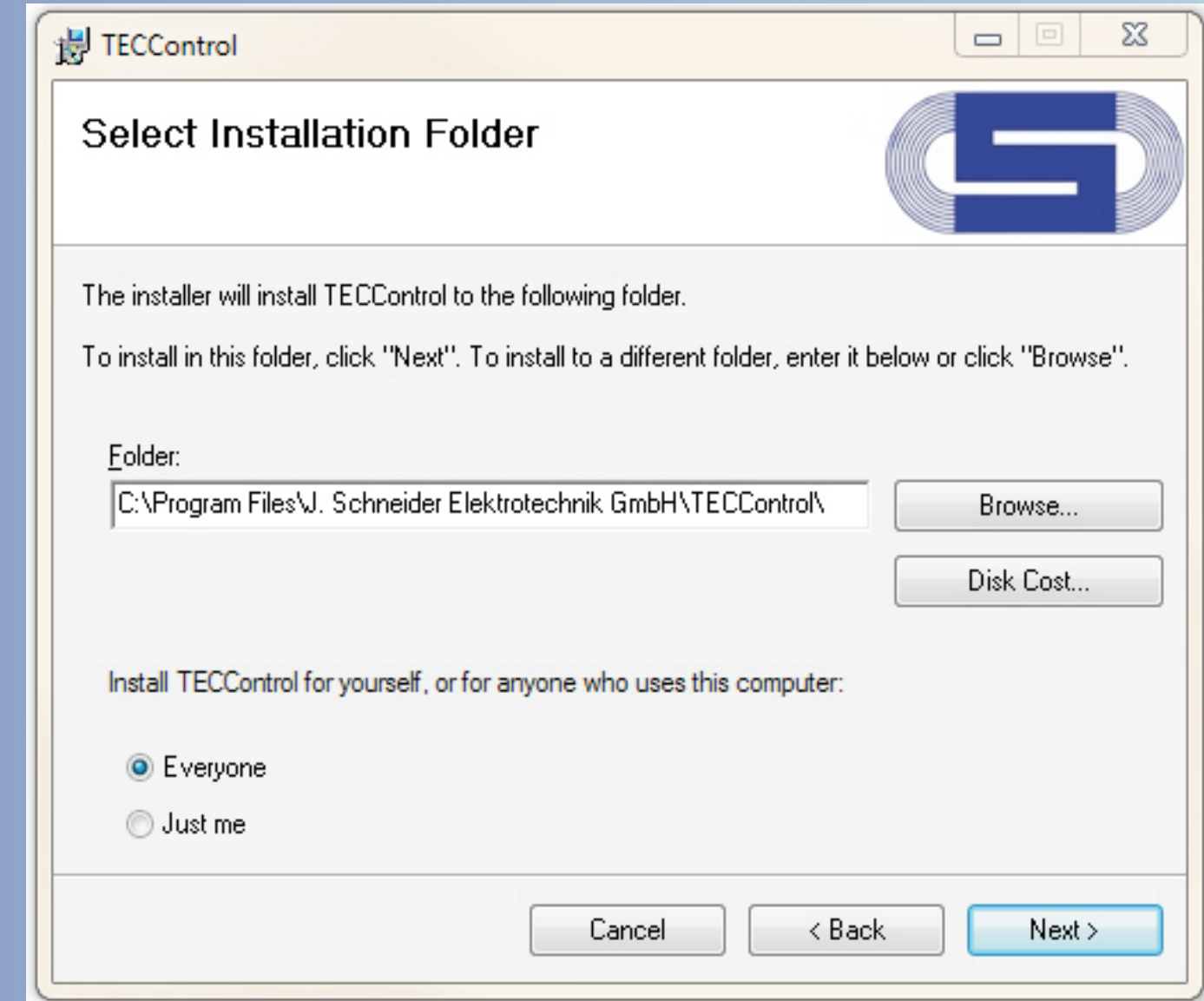
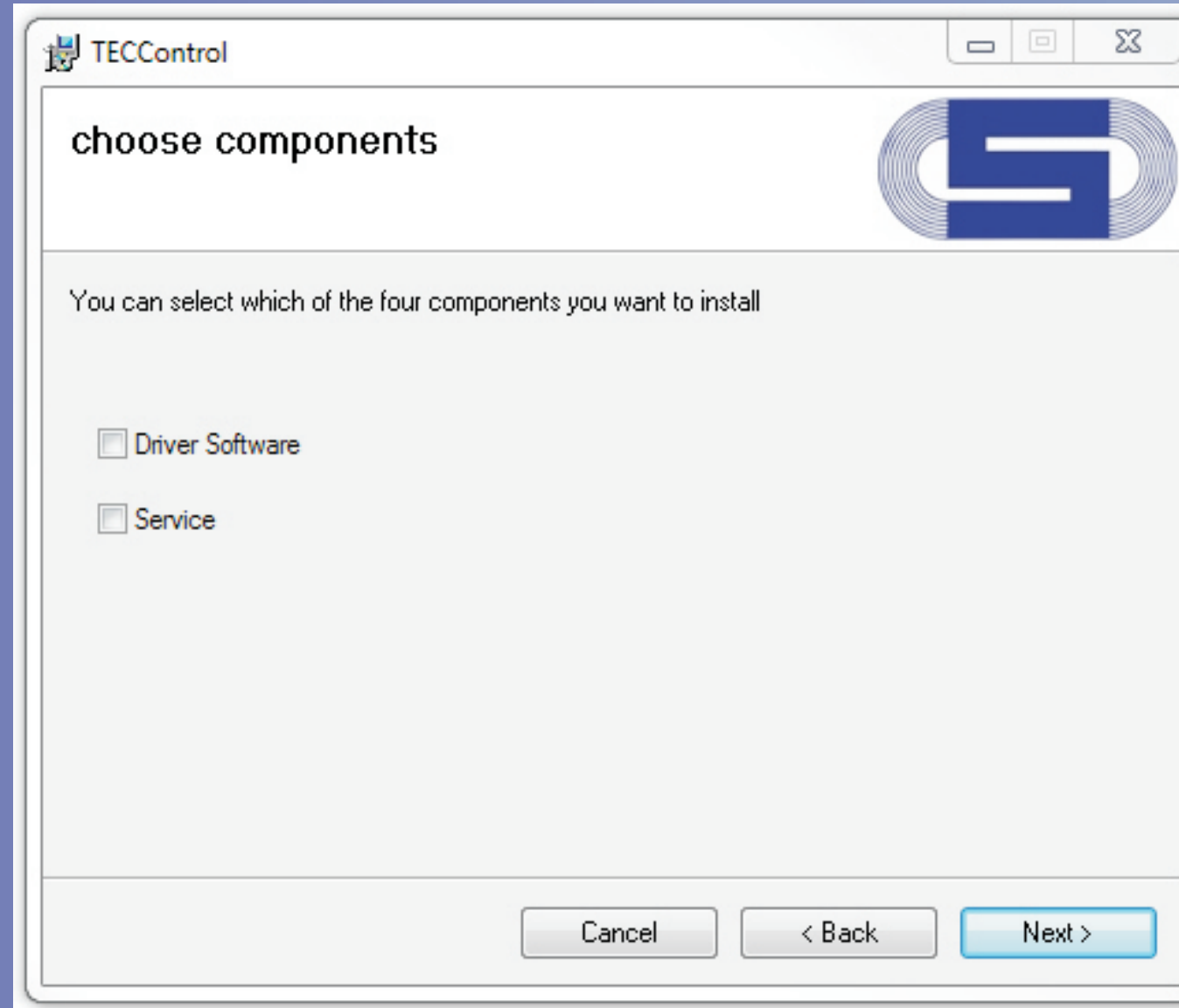
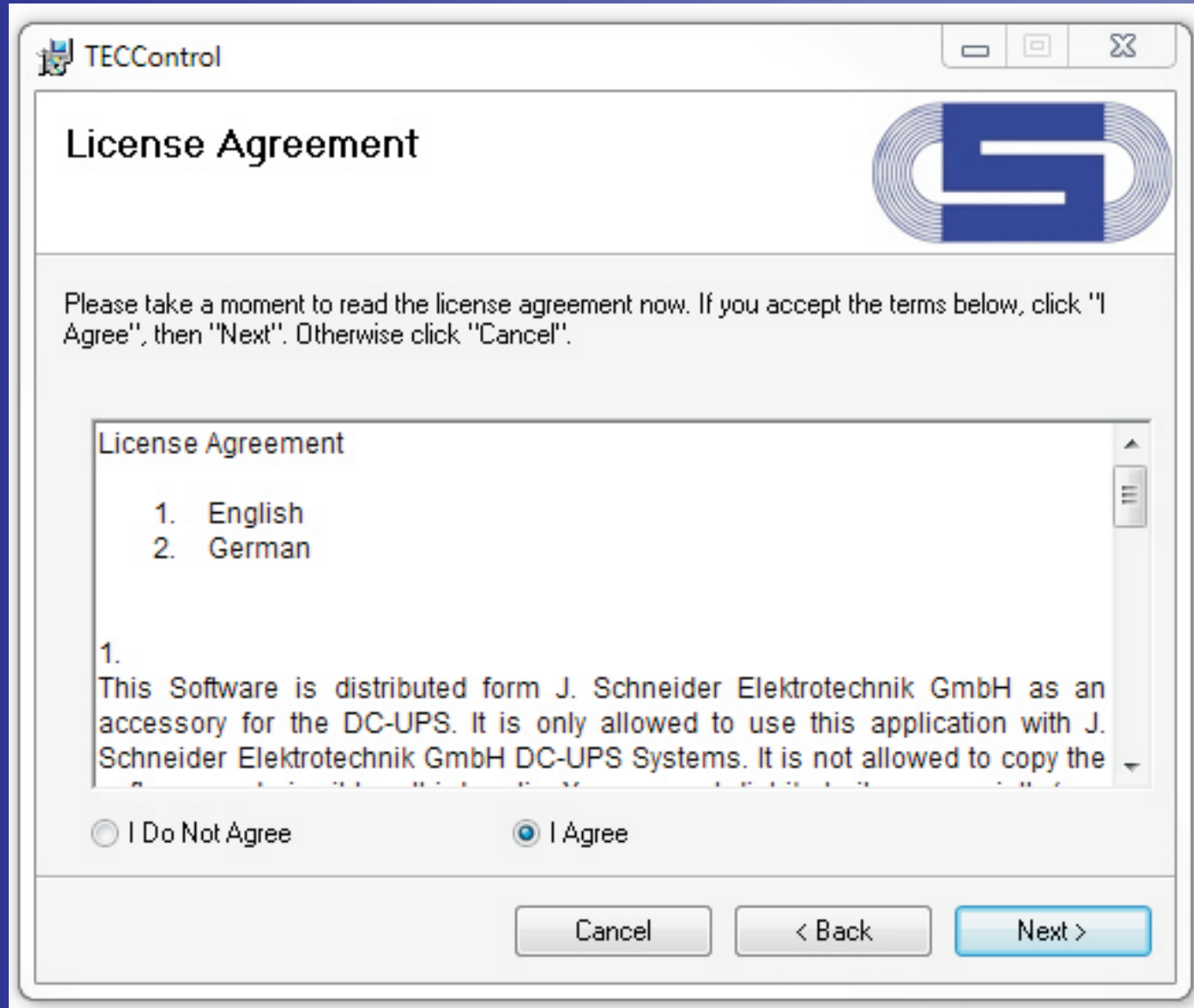


8. „Überwachung“:
Darstellung des aktuellen USV Status. Weiter ist es möglich die Überwachung zu stoppen und die *TECControl* zu verstecken.



9. „Überwachung“:
System-Shutdown steht unmittelbar bevor. Dateien wurden ausgeführt.

Software Installation



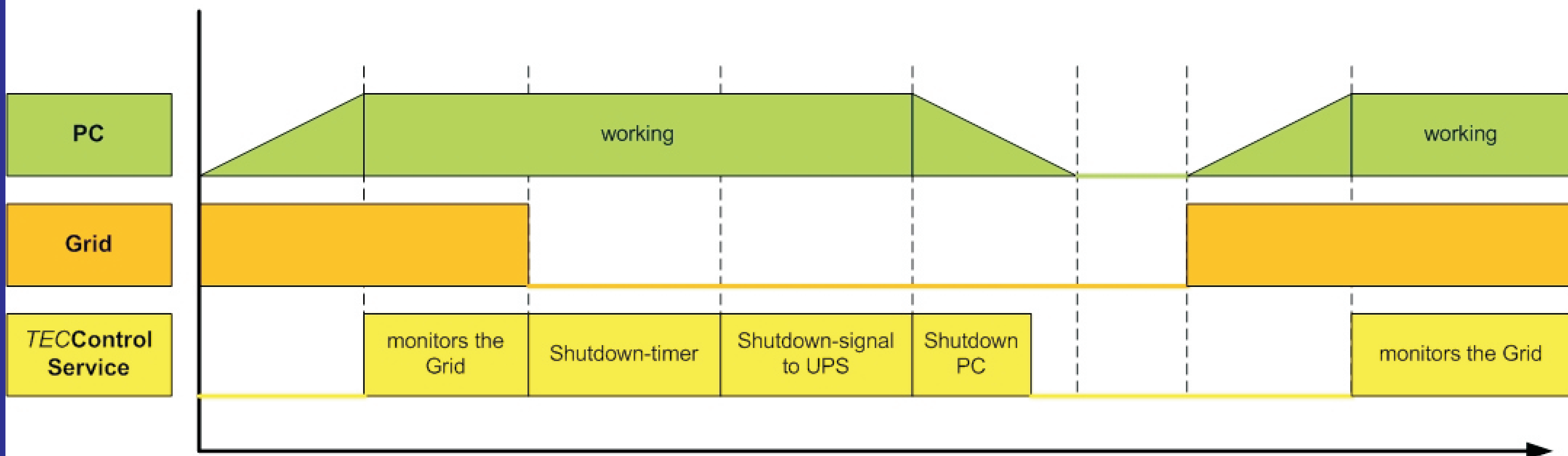
1. The licence agreement must be accepted before starting the installation.

2. The installation file folder and the users of the *TECControl*-Software can be selected freely.

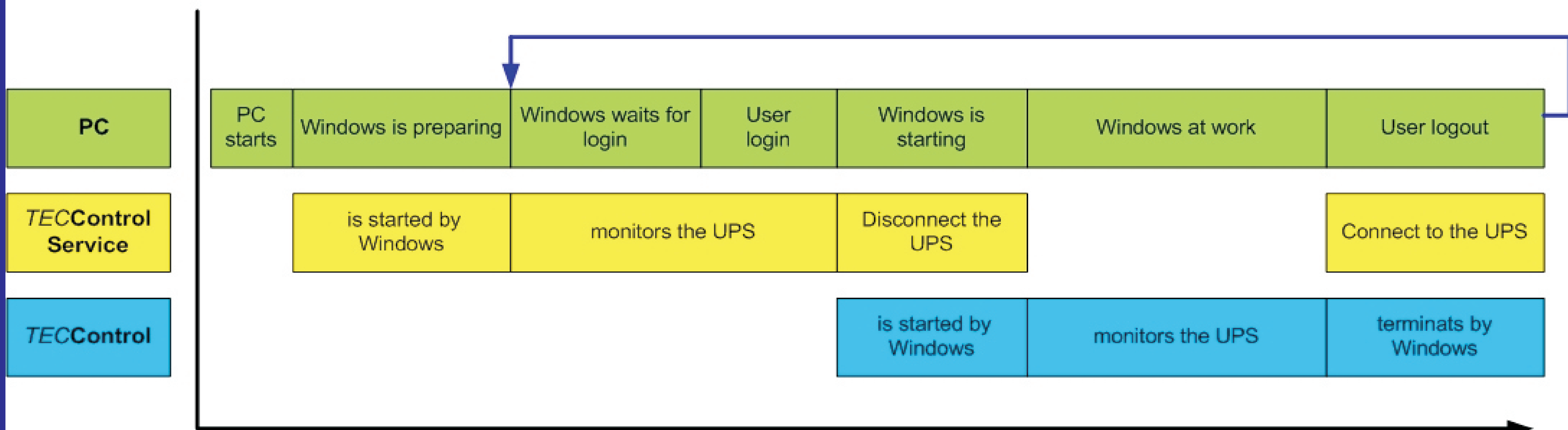
3. Optionally to the Windows-Software the device driver and the *TECControl*-Service can be installed.

Flowchart

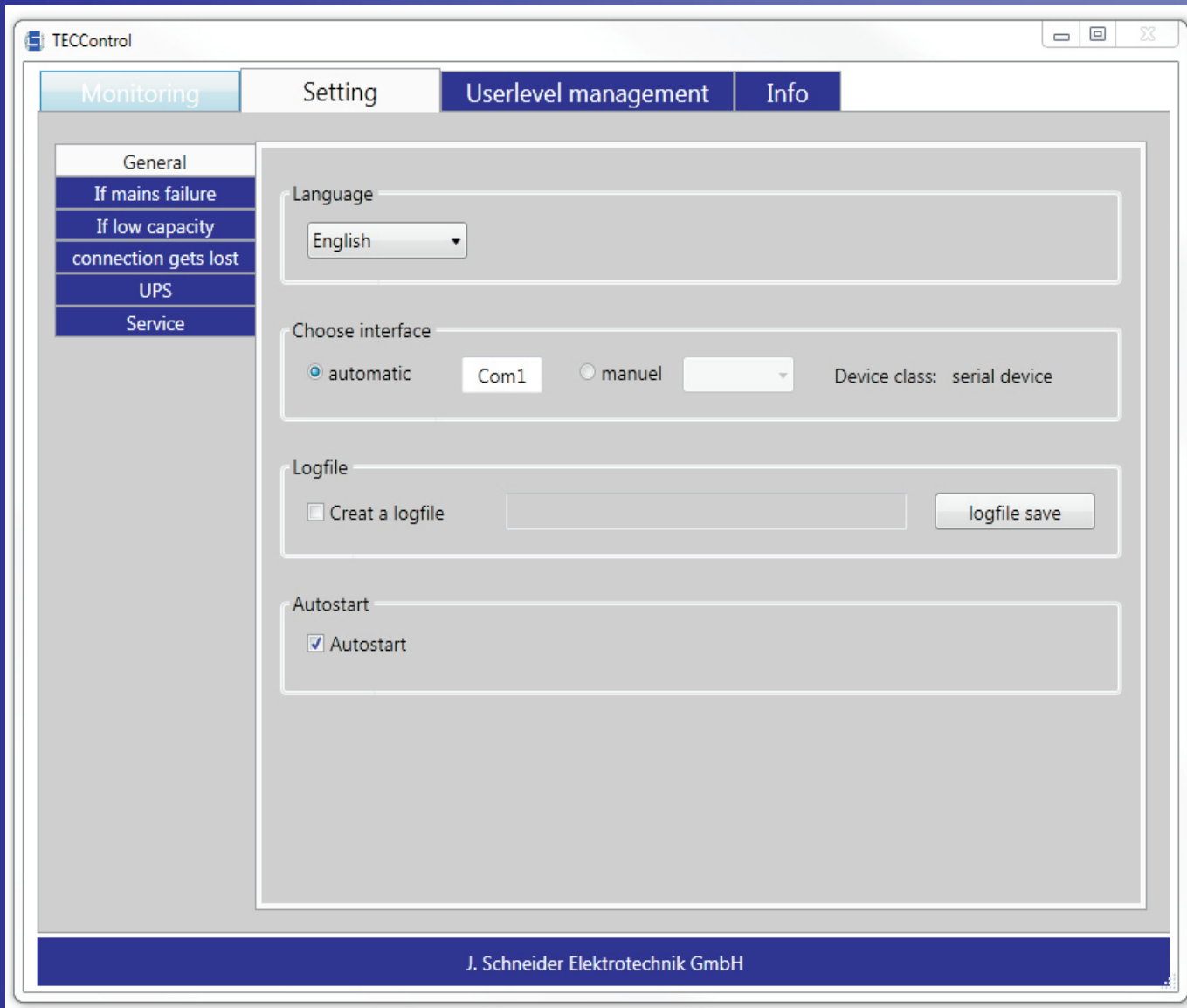
TECControl Service



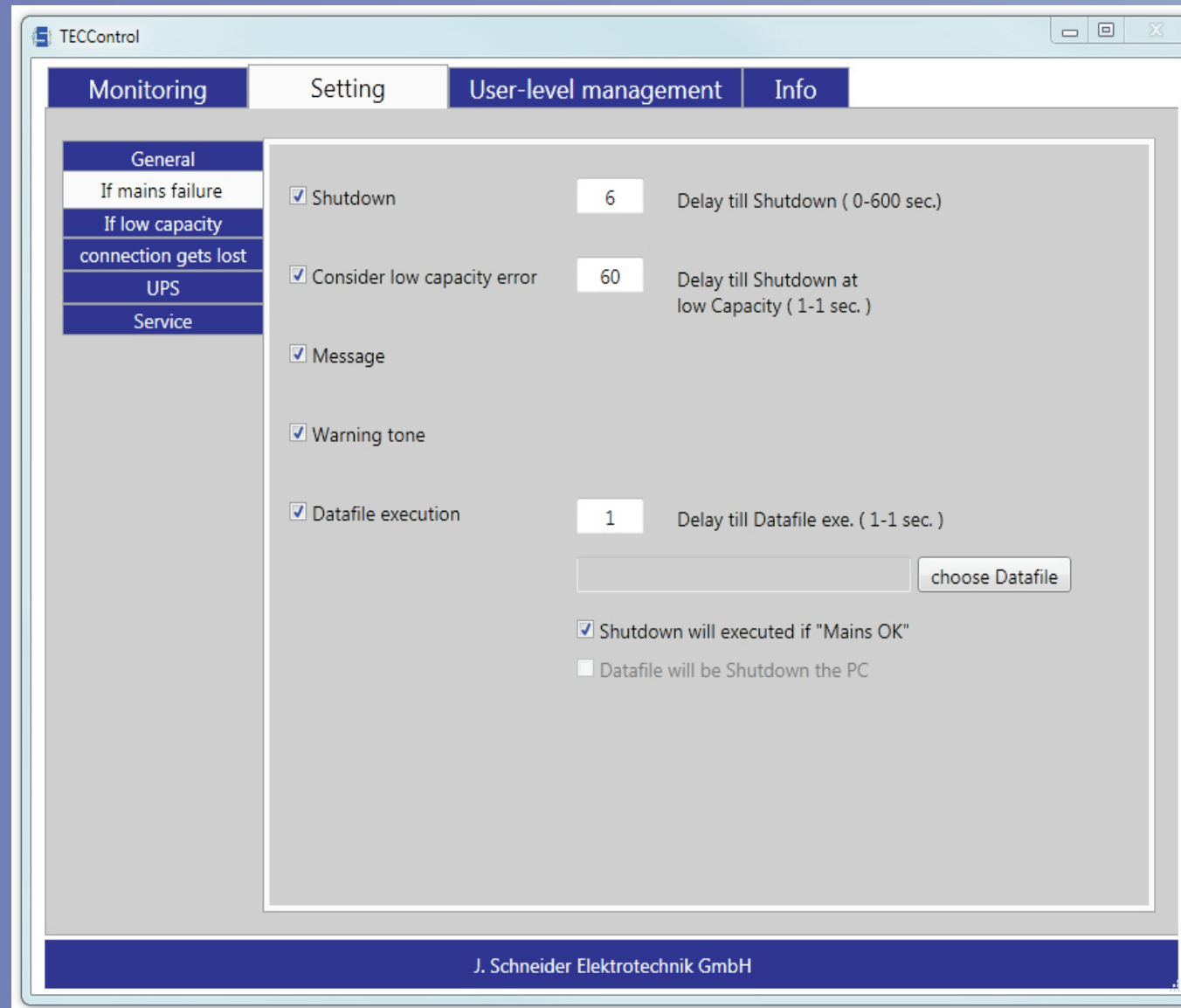
TECControl Systemstart



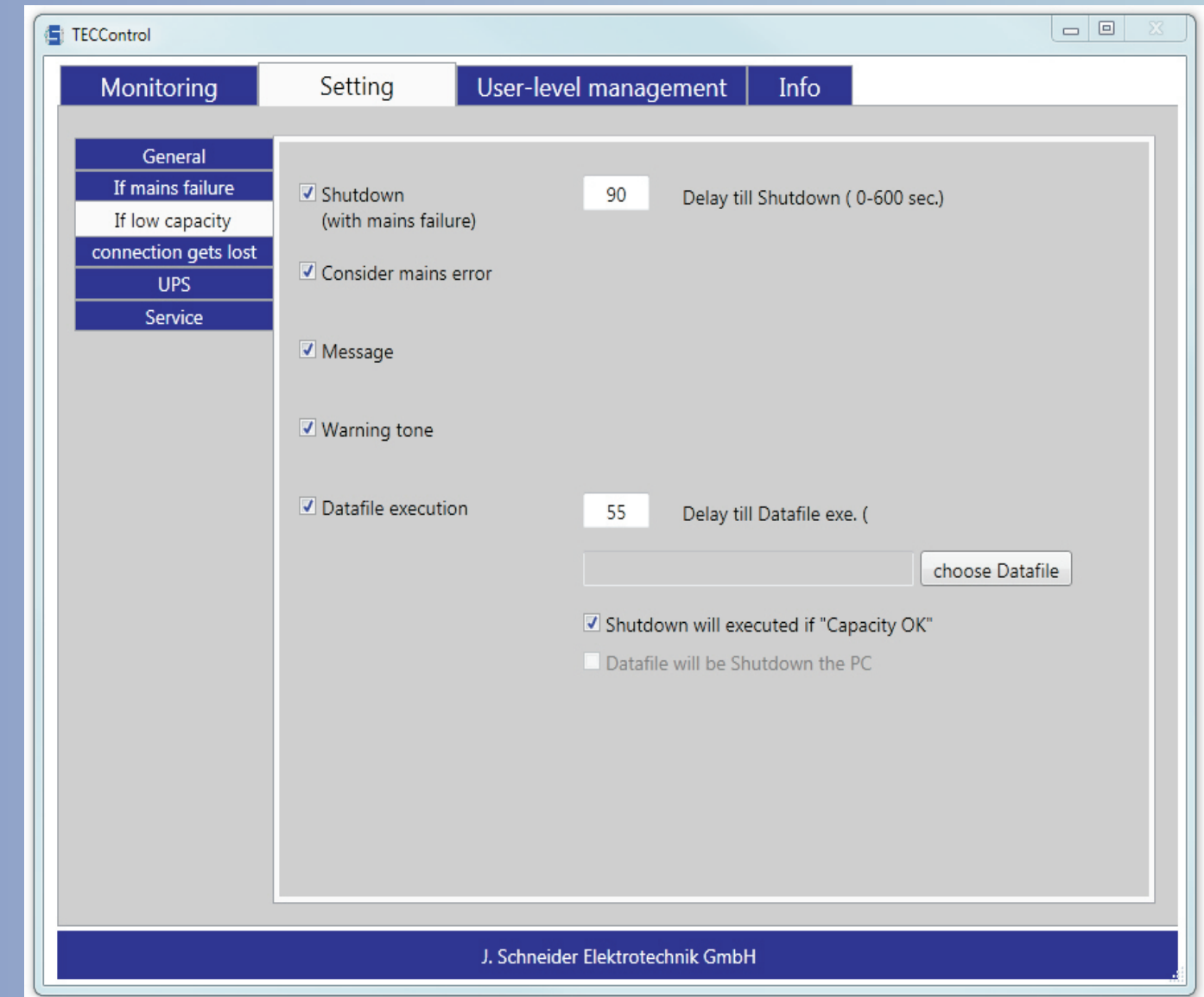
Operation of the *TECControl* Software



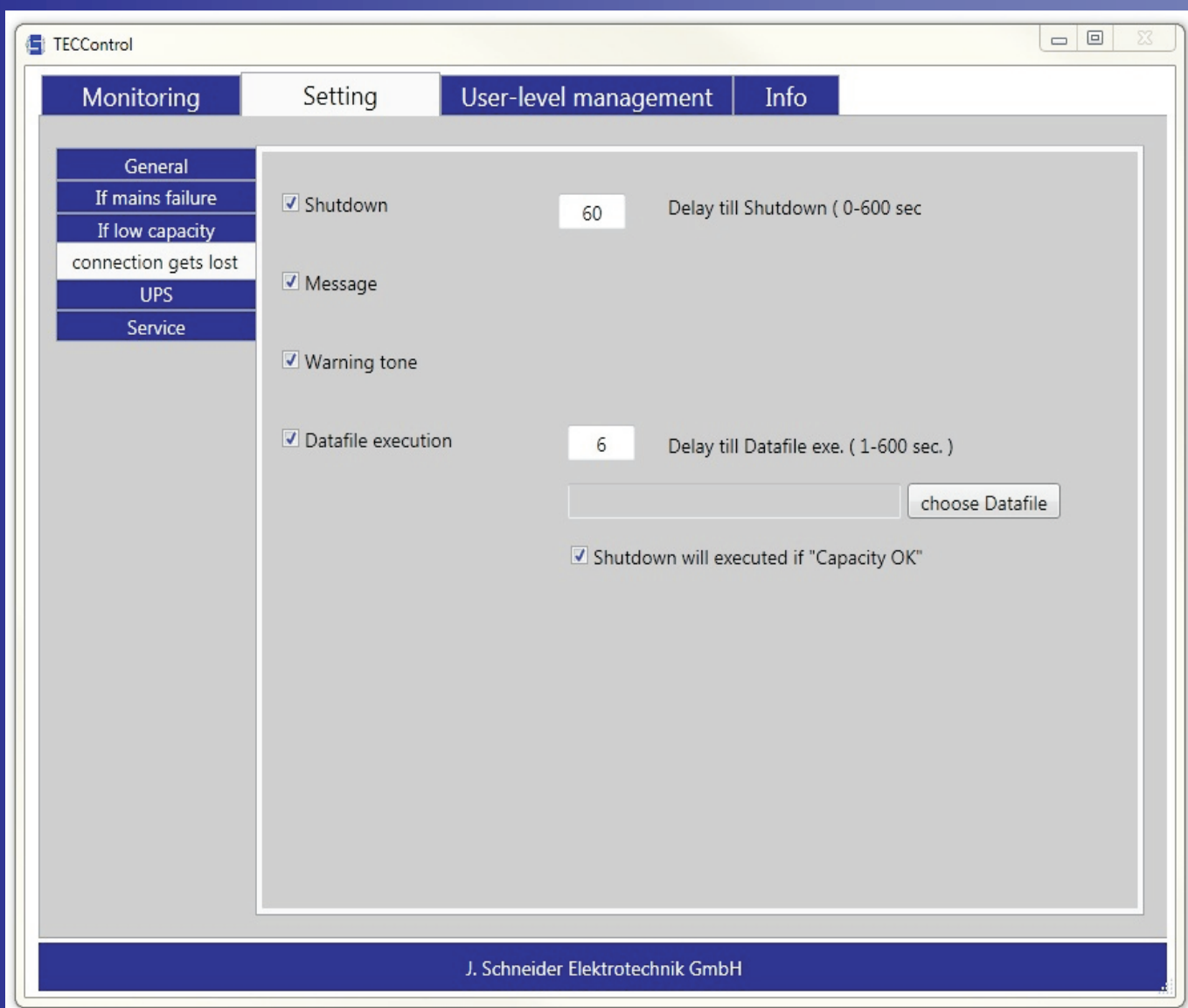
1. „General“:
Possibility of selection of language, interface, journal and autostart.



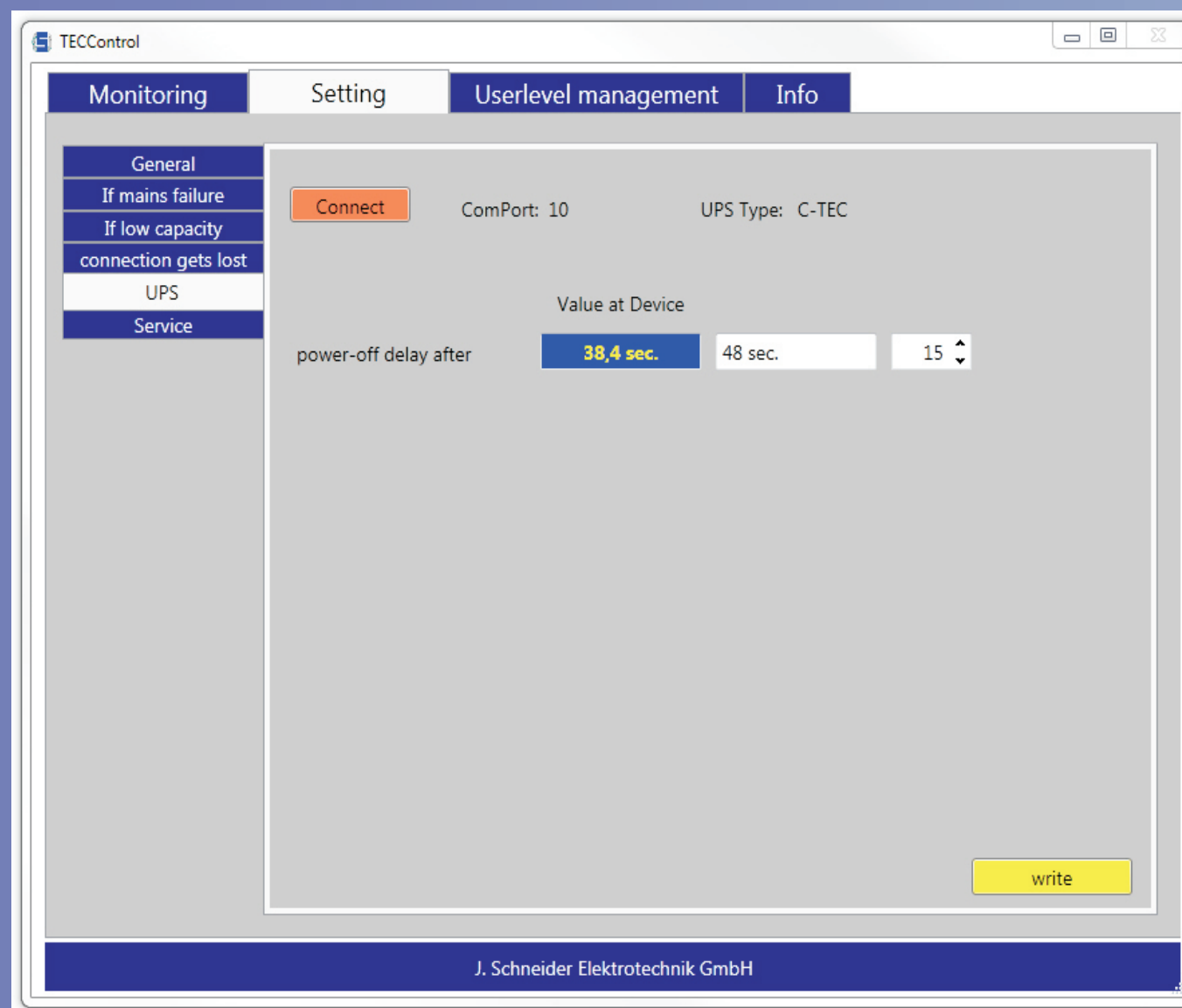
2. „If mains failure“:
Possible actions: System shutdown, signal, audio warning, execution of an external file/program.



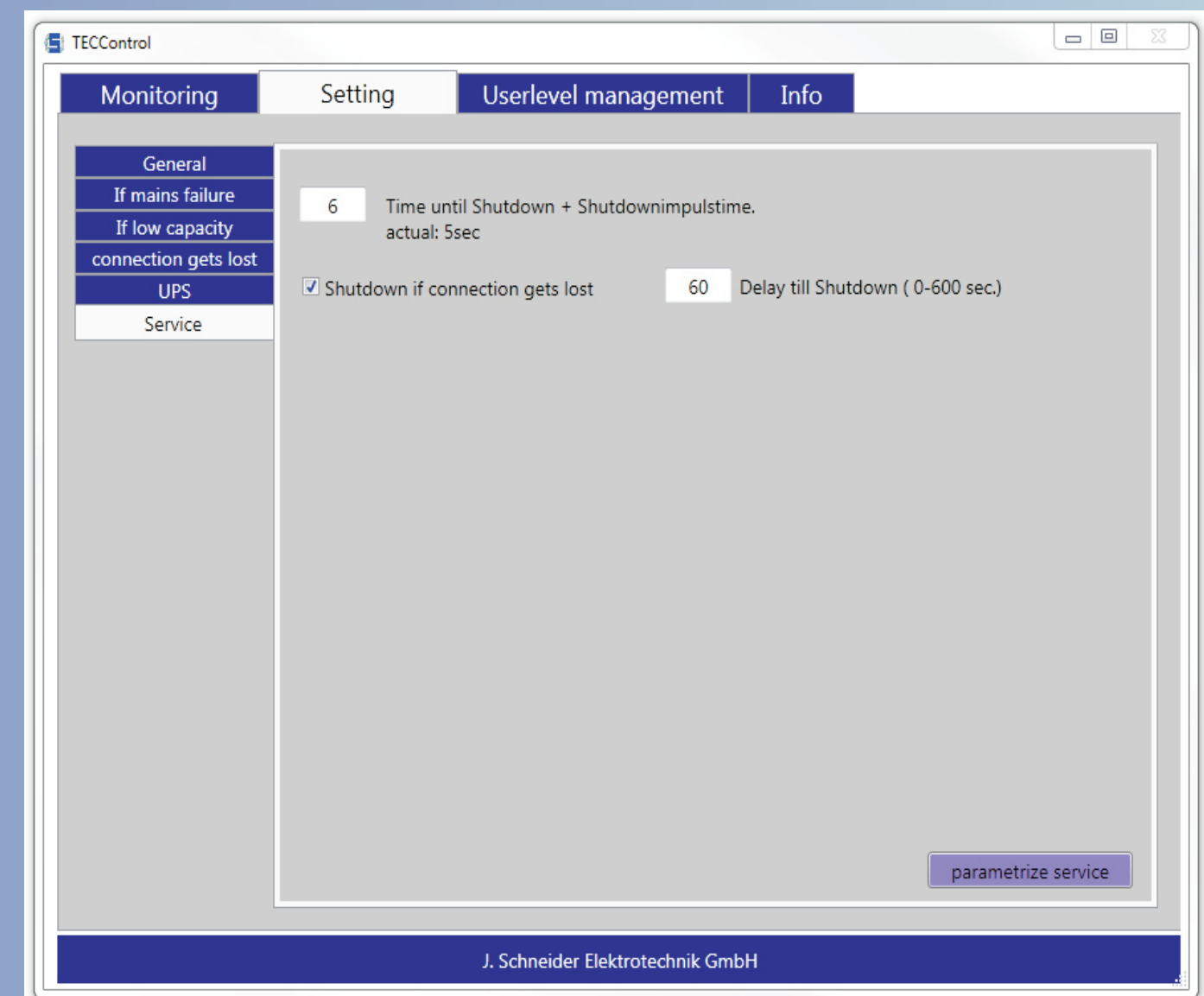
3. „If low capacity“:
Possible actions: System shutdown, signal, audio warning, execution of an external file/program.



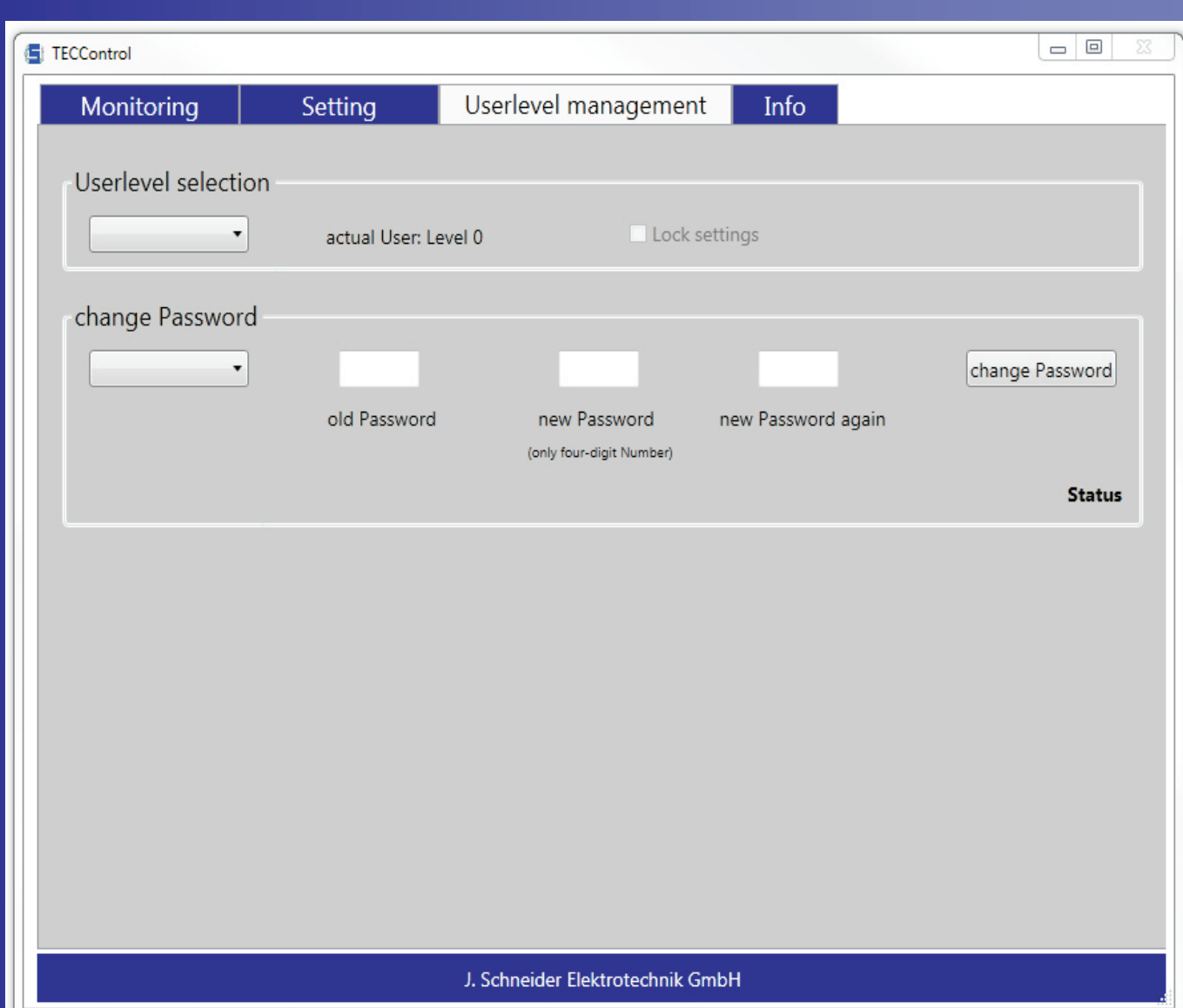
4. „Connection gets lost“:
Possible action: System shutdown.



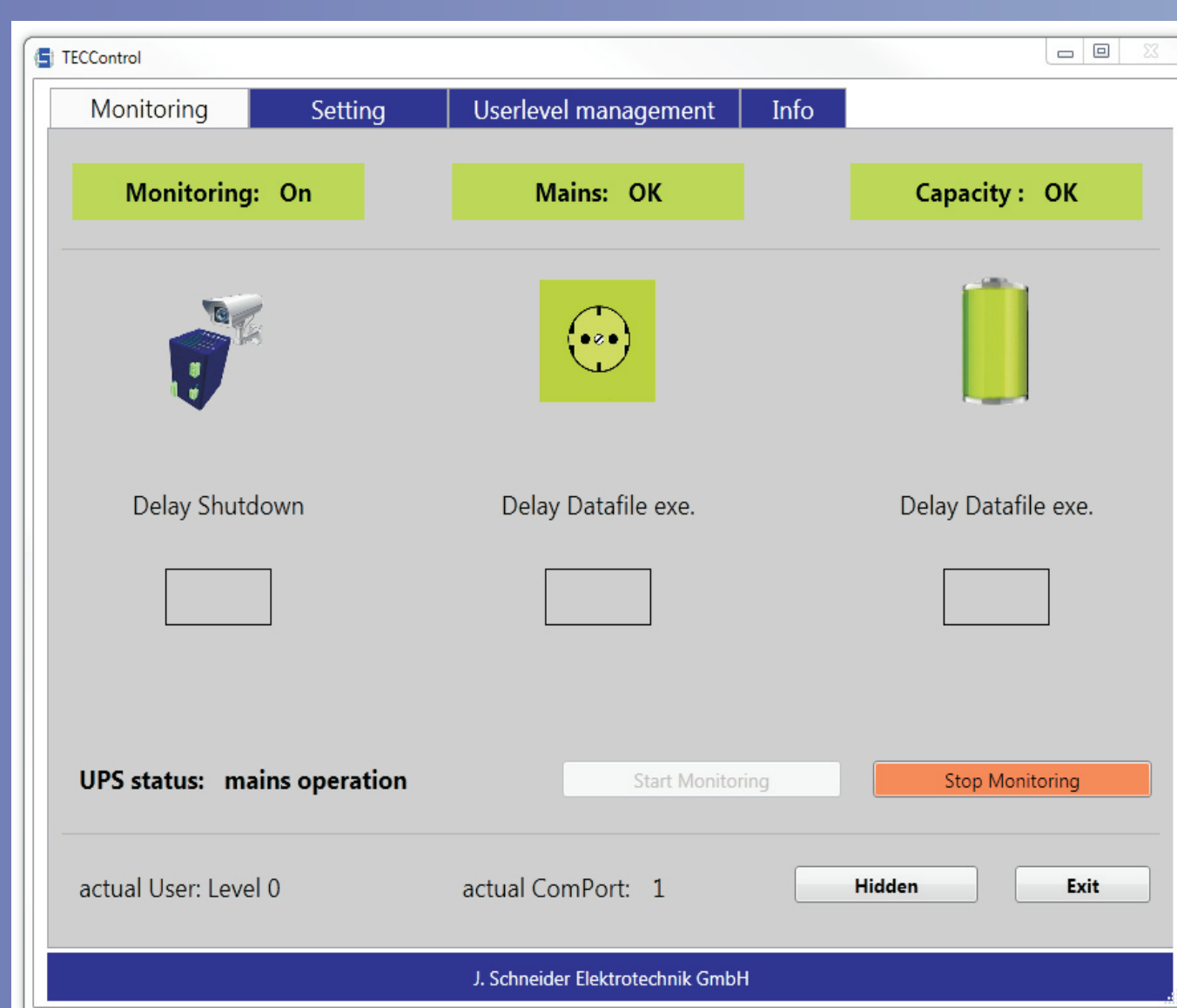
5. „UPS“:
adjustment of the device parameter *shut down delay at USB Shutdown-Signal*.



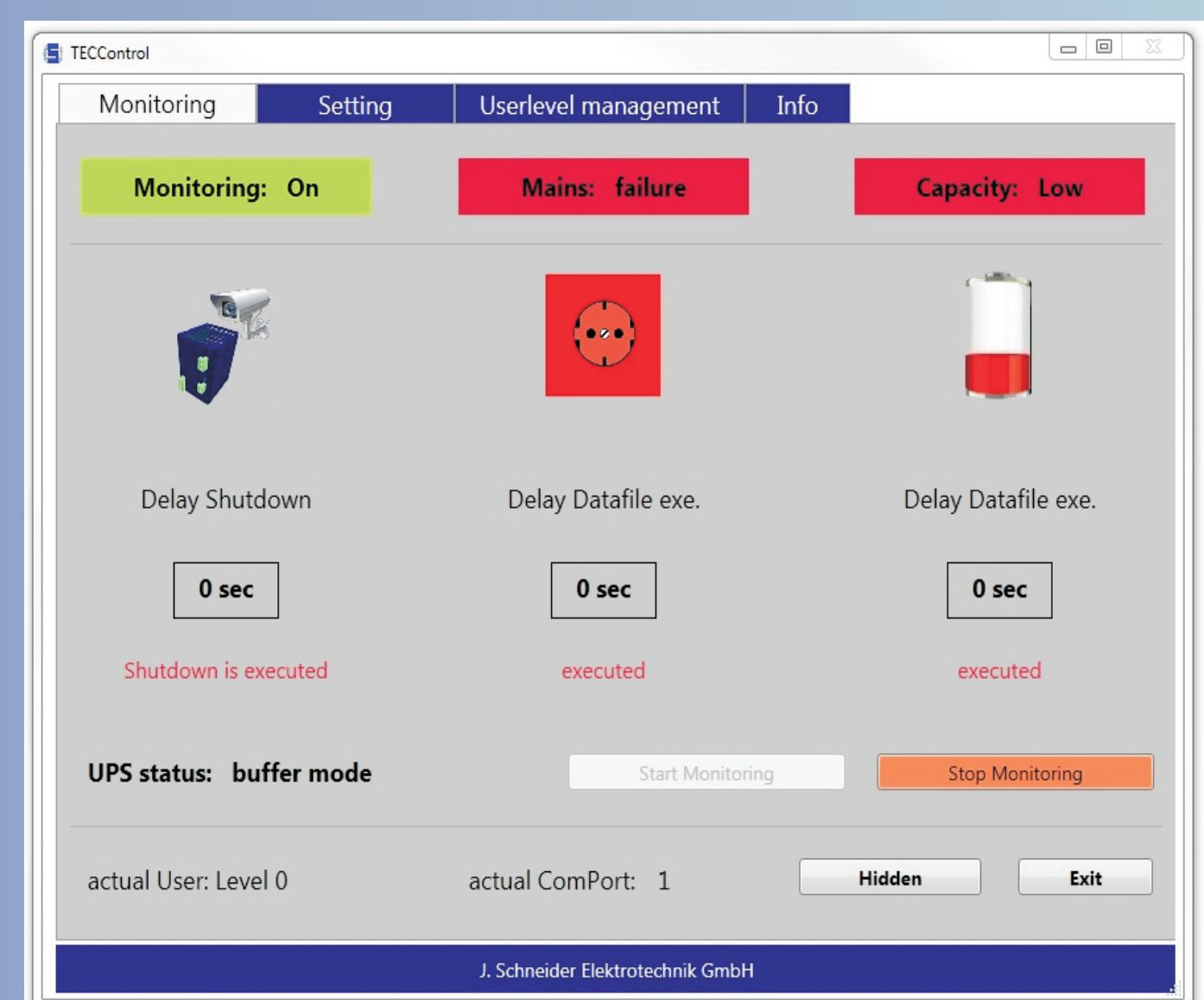
6. „Service“:
Service-Parameter:
time until system-shutdown (mains failure)
system-shutdown (connection lost)



7. „Userlevel management“:
possibility to protect adjustments of the *TECControl* software.



8. „Monitoring“:
Monitoring of the present UPS state. It is possible to stop the monitoring and to hide the *TECControl*.



9. „Monitoring“:
System shutdown is imminent. Files are executed.